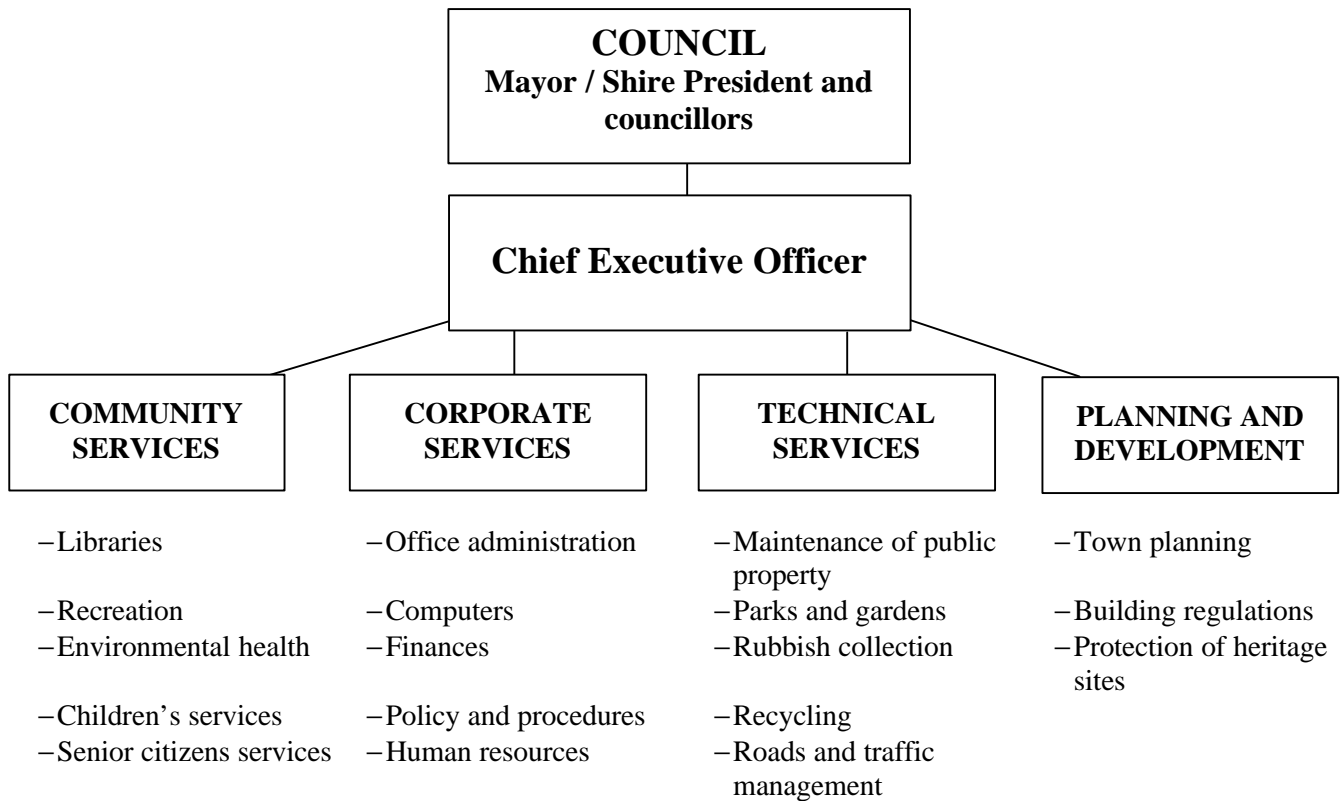




ELECTORAL EDUCATION CENTRE - LOCAL GOVERNMENT ACTIVITY 3

STRUCTURE AND FUNCTION OF LOCAL GOVERNMENT



Which department would you contact for information on the following ?

- Your nearest school holiday programme _____
- Services for recycling wastepaper _____
- The council's employment policy _____
- Strategies for pollution control _____
- Guidelines for new buildings _____
- Areas of historical significance near you _____
- Requesting a footpath in your street be repaired _____
- Services for elderly residents _____