

August 2008

Information KIT



WESTERN AUSTRALIAN Electoral Commission

The materials contained in this Information Pack have been prepared by the Western Australian Electoral Commission to provide information to media representatives. Members of Parliament, political parties, candidates, polling officials and other interested groups.

The complete pack contains a collection of fact sheets together with a set of region and district profile sheets and region maps.

More detailed information on previous elections including in-depth results, historical material and statistical data can be obtained by contacting the Western Australian Electoral Commission.

In addition, the Western Australian Electoral Commission has a website on the Internet at www.waec.wa.gov.au. Material listed on the website will be updated prior to the forthcoming election and will include much of the information available in this pack.

The Commission is continually striving to provide the best possible service to all our customers and intends to use the Internet as the major means of publishing the results of the forthcoming election as they become available.

Any enquiries regarding the information contained within this Information Kit, or any media enquiries should be directed to Michelle Conaboy on (08) 9214 0476.



Foreword	i
Table of Contents	ii

Fact Sheets

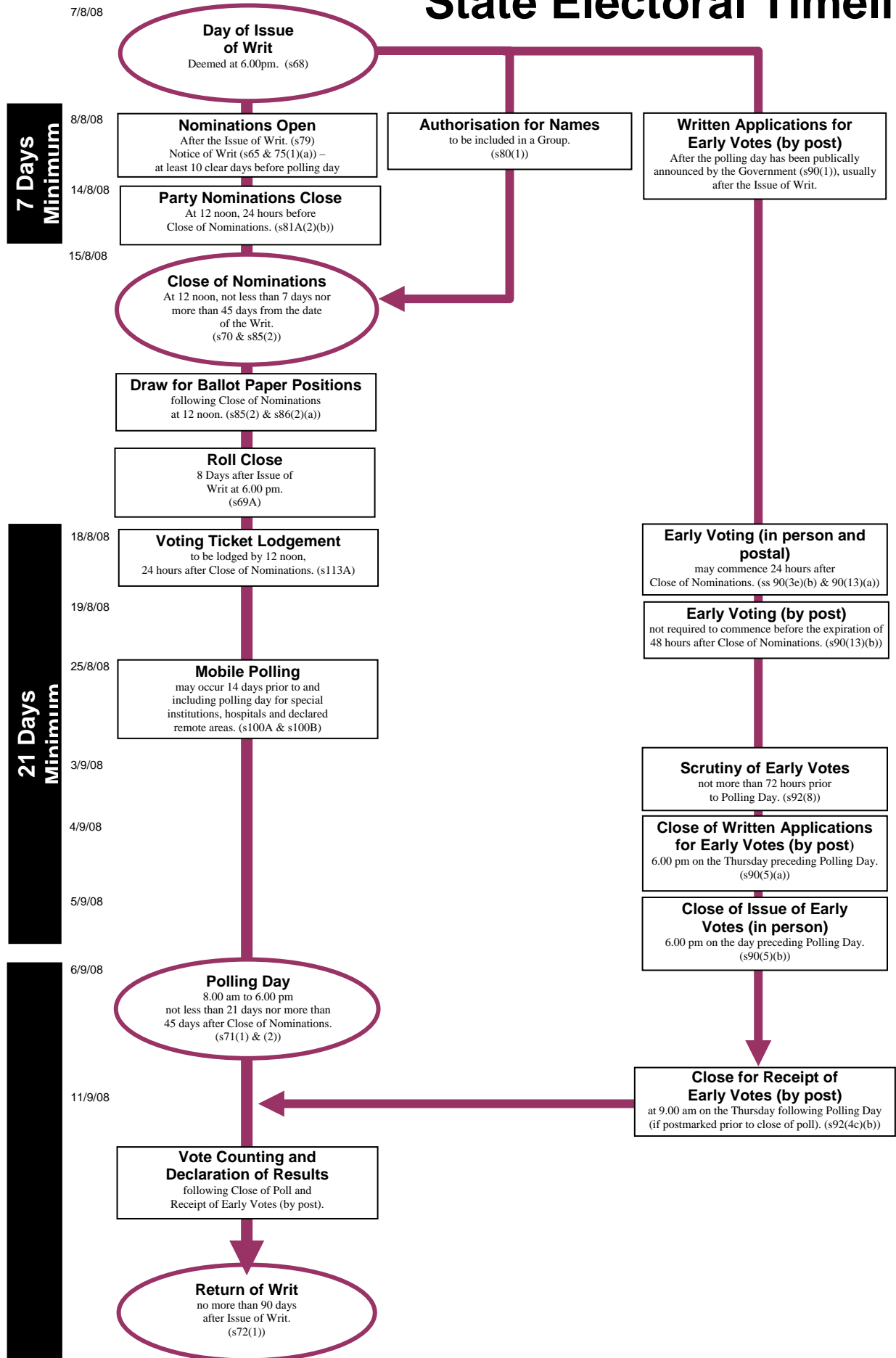
Fact Sheet 1	State Electoral Timeline	1
Fact Sheet 2	Legislative Assembly	2
Fact Sheet 3	Legislative Council	3
Fact Sheet 4	Current Sitting Members – Legislative Assembly	5
Fact Sheet 5	Current Sitting Members – Legislative Council	7
Fact Sheet 6	Who Can Stand for Parliament	9
Fact Sheet 7	Registration for Political Parties	10
Fact Sheet 8	2007 Electoral Distribution	12
Fact Sheet 9	Elector Assistance	14
Fact Sheet 10	Full Preferential System	15
Fact Sheet 11	Proportional Representation System	17
Fact Sheet 12	Notional Distribution of Preferences	18
Fact Sheet 13	List of Returning Officers – Legislative Assembly	19
Fact Sheet 14	List of Returning Officers – Legislative Council	22
Fact Sheet 15	Premiers of Western Australia	23
Fact Sheet 16	Frequently Asked Questions	24
Fact Sheet 17	Glossary of Terms	26
Fact Sheet 18	Internet and Contact Details	28
Fact Sheet 19	Registered Political Parties	30

Regional Profiles – Information correct as of State General Election 2005

New District Profiles – Electoral distributions as of 2007



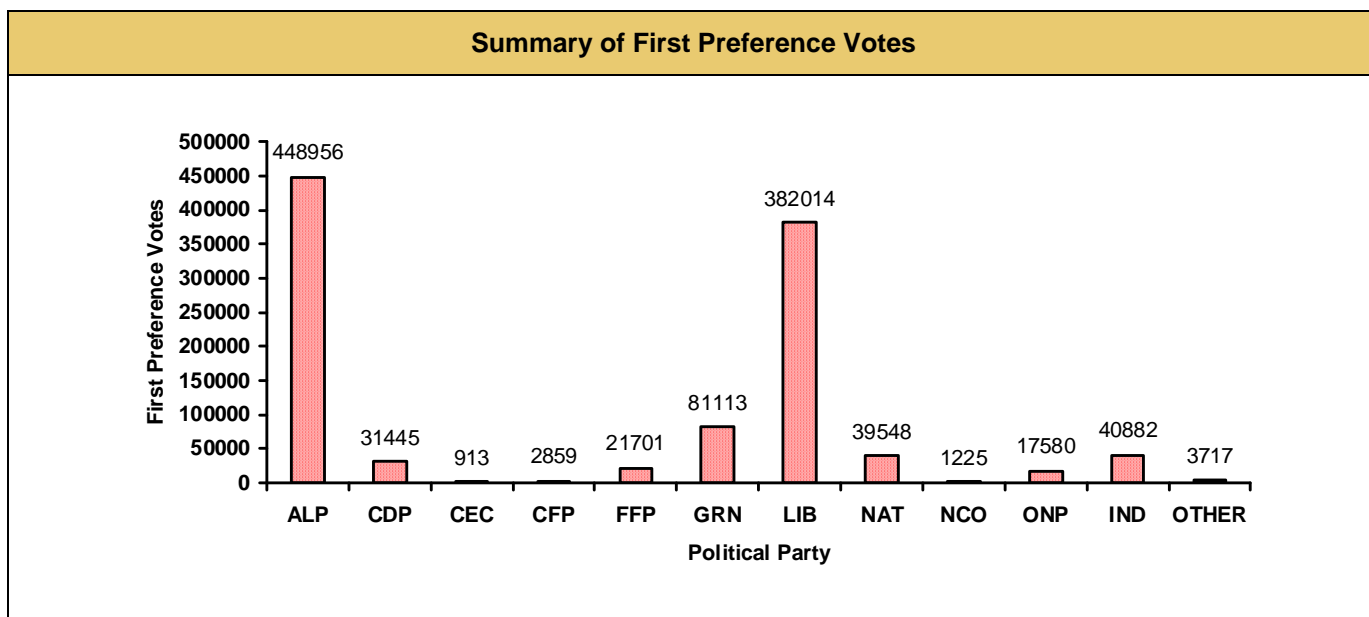
State Electoral Timeline





Summary of the Legislative Assembly 2005 State General Election Results		
Political Party	Candidates nominated	Seats won
Australian Labor Party	57	32
Christian Democratic Party WA	57	0
Greens (WA)	57	0
Liberal	55	18
Community 1 st	1	0
New Country Party	5	0
The Nationals	14	5
One Nation	45	0
Citizens Electoral Council	9	0
Independent	39	2
Family First	34	0
No party affiliation	2	0

Number of Electors on Roll	
1,259,262	
Total Votes Admitted to Count	
Ordinary	882,252
Early Votes (by post)	37,651
Early Votes (in person)	33,098
Absent	118,424
Provisional	528
Valid Votes	1,071,953
Informal Votes	59,316
TOTAL VOTES	1,131,269



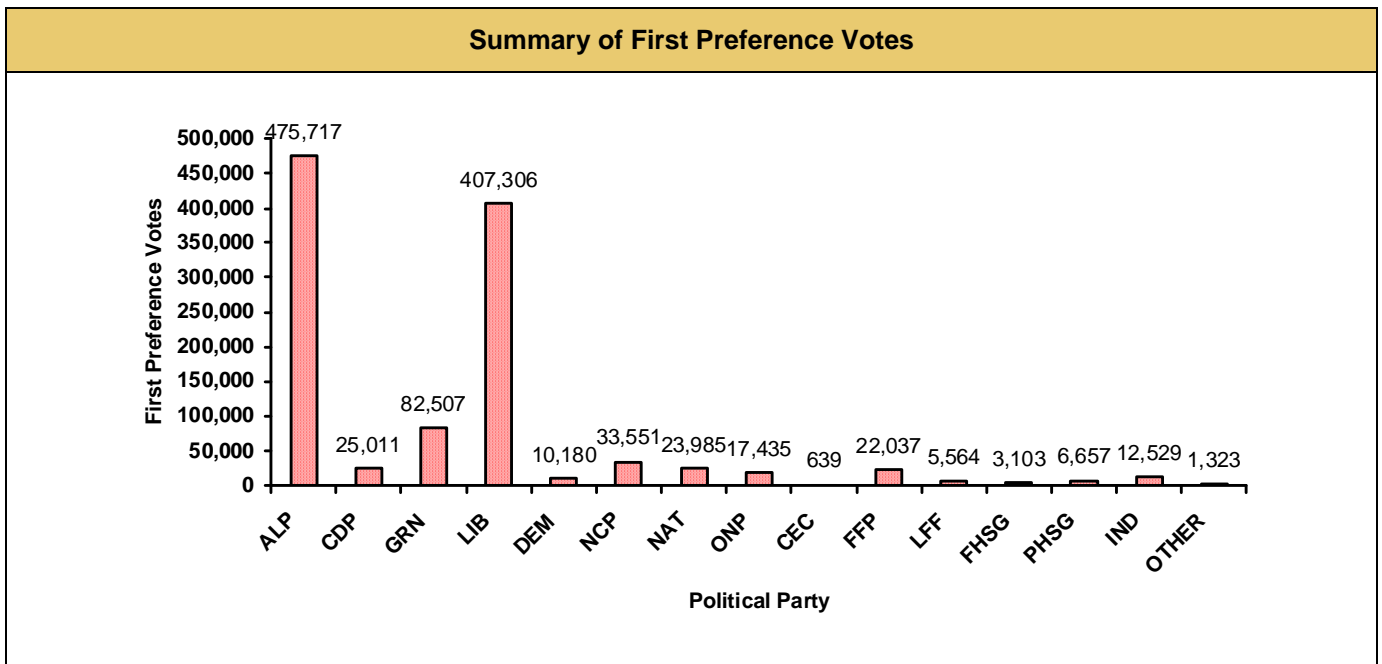
Composition of the Legislative Assembly following the 2005 State General Election	
Political Party	Seats
Australian Labor Party	32
Liberal	18
THE NATIONALS	5
Independent	2
TOTAL	57

Method of Election – Full Preferential
(see Fact Sheet 10)



Summary of the Legislative Council 2005 State General Election Results	
Political Party	Candidates nominated
Australian Labor Party	33
Christian Democratic Party WA	12
Greens (WA)	13
Liberal	29
Democrats	12
New Country Party	7
The Nationals	6
One Nation	13
No party affiliation	9

Number of Electors on Roll	
1,259,262	
Total Votes Admitted to Count	
Ordinary	903,101
Early Votes (by post)	38,048
Early Votes (in person)	36,170
Absent	119,500
Provisional	525
Valid Votes	1,097,344
Informal Votes	36,056
TOTAL VOTES	1,133,400





Current Composition						
Region	Number of Members Required in Region	ALP	LIB	GRN	NP	IND
East Metropolitan	5	3	2	0	0	0
North Metropolitan	7	3	3	1	0	0
South Metropolitan	5	3	2	0	0	0
Agricultural	5	1	3	0	1	0
Mining and Pastoral	5	2	2	0	0	1
South West	7	3	3	1	0	0
TOTAL	34	15	15	2	1	1

New Appointments since the 2005 State General Election			
Region	Elected Member at 2005 State General Election	Member Elected after 2005 State General Election	Date of appointment
Agricultural	ROWE, Margaret-Anne	ELLIS, Brian	16 July 2007
East Metropolitan	PRATT, Louise Clare	PHAM, Batong Vu	19 November 2007
Agricultural	CRIDDLE, Murray John	DUNCAN, Wendy	29 January 2008

Changes in Party Affiliation since the 2005 State General Election
1. Shelley Frances Archer was elected at the 2005 State general election as a Member of the Australian Labor Party but resigned during the Parliamentary term and became an Independent Member of Parliament.

Electorate	Member	Party
Albany	WATSON, Peter Bruce	Australian Labor Party
Alfred Cove	WOOLLARD, Janet May	Independent
Armadale	MacTIERNAN, Alannah Joan Geraldine	Australian Labor Party
Avon	WALDRON, Terrence Keith	National Party
Balcatta	KOBELKE, John Charles	Australian Labor Party
Ballajura	D'ORAZIO, John Biase	Independent
Bassendean	WHITELY, Martin Paul	Australian Labor Party
Belmont	RIPPER, Eric Stephen	Australian Labor Party
Bunbury	CASTRILLI, Giovanni Mario	Liberal
Capel	THOMAS, Steven Caldwell	Liberal
Carine	HODSON-THOMAS, Katina	Liberal
Central Kimberley-Pilbara	STEPHENS, Thomas Gregory	Australian Labor Party
Churchlands	CONSTABLE, Elizabeth	Independent
Cockburn	LOGAN, Francis Michael	Australian Labor Party
Collie-Wellington	MURRAY, Michael Philip	Australian Labor Party
Cottesloe	BARNETT, Colin James	Liberal
Darling Range	DAY, John Howard Dadley	Liberal
Dawesville	HAMES, Kim Desmond	Liberal
Fremantle	MCGINTY, James Andrew	Australian Labor Party
Girrawheen	QUIRK, Margaret Mary	Australian Labor Party
Geraldton	HILL, Shane Robin	Australian Labor Party
Greenough	WOODHAMS, Grant Allen	National Party
Hillarys	JOHNSON, Robert Frank	Liberal
Joondalup	O'GORMAN, Anthony Patrick	Australian Labor Party
Kalgoorlie	BIRNEY, Matthew John	Liberal
Kenwick	MCHALE, Sheila Margaret	Australian Labor Party
Kimberley	MARTIN, Carol Anne	Australian Labor Party
Kingsley	HUGHES, Judith	Australian Labor Party
Leschenault	BARRON-SULLIVAN, Daniel Frank	Independent
Mandurah	TEMPLEMAN, David Alan	Australian Labor Party
Maylands	EDWARDS, Judith Mary	Australian Labor Party
Merredin	GRYLLS, Brendon John	National Party
Midland	ROBERTS, Michelle Hopkins	Australian Labor Party
Mindarie	QUIGLEY, John Robert	Australian Labor Party
Moore	SNOOK, Gary*	Liberal



Electorate	Member	Party
Murchison-Eyre	BOWLER, John James Mansell	Independent
Murdoch	PORTER, Charles Christian**	Liberal
Murray	COWPER, Murray John*	Liberal
Nedlands	WALKER, Susan Elizabeth	Independent
North West Coastal	RIEBELING, Frederick	Australian Labor Party
Peel	PAPALIA, Paul***	Australian Labor Party
Perth	HYDE, John Norman	Australian Labor Party
Riverton	MCRAE, Anthony David	Australian Labor Party
Rockingham	MCGOWAN, Mark	Australian Labor Party
Roe	JACOBS, Dr Graham Gibson	Liberal
Serpentine-Jarrahdale	SIMPSON, Anthony James *	Liberal
South Perth	MCGRATH, John Edwin*	Liberal
Southern River	ANDREWS, Paul William	Australian Labor Party
Stirling	REDMAN, Donald Terrence*	National Party
Swan Hills	RADISICH, Jaye Amber	Australian Labor Party
Vasse	BUSWELL, Troy Raymond*	Liberal
Victoria Park	WYATT, Benjamin Sana****	Australian Labor Party
Wagin	WALDRON, Terrence Keith	National Party
Wanneroo	GUISE, Dianne Joy	Australian Labor Party
Warren-Blackwood	OMODEI, Paul Domenic	Independent
Willagee	CARPENTER, Alan John	Australian Labor Party
Yokine	KUCERA, Robert Charles	Independent

* Members elected for the first time at the 2005 State general election on Saturday 26 February 2005

** Elected in the Murdoch by-election on Saturday 23 February 2008

*** Elected in the Peel by-election on Saturday 3 February 2007

**** Elected in the Victoria Park by-election on Saturday 11 March 2006



Electorate	Member	Party
Agricultural	CHANCE, Kimberley Maurice	Australian Labor Party
Agricultural	DONALDSON, Bruce Kirwan	Liberal
Agricultural	DUNCAN, Wendy Maxine ****	National Party
Agricultural	ELLIS, Brian Charles **	Liberal
Agricultural	FELS, Anthony James *	Liberal
East Metropolitan	FARAGHER, Donna Evelyn Mary *	Liberal
East Metropolitan	GRIFFITHS, Nicholas David	Australian Labor Party
East Metropolitan	MORTON, Helen Margaret *	Liberal
East Metropolitan	PHAM, Batong Vu ***	Australian Labor Party
East Metropolitan	RAVLICH, Ljiljana Maria	Australian Labor Party
Mining and Pastoral	ARCHER, Shelley Frances *****	Independent
Mining and Pastoral	BASTON, Kenneth Charles *	Liberal
Mining and Pastoral	CATANIA, Vincent Alexander *	Australian Labor Party
Mining and Pastoral	FORD, Jonathan Robert	Australian Labor Party
Mining and Pastoral	MOORE, Norman Frederick	Liberal
North Metropolitan	CASH, Samuel George Ernest	Liberal
North Metropolitan	COLLIER, Peter Charles *	Liberal
North Metropolitan	DERMER, Edmund Rupert Joseph	Australian Labor Party
North Metropolitan	GIFFARD, Graham Thomas	Australian Labor Party
North Metropolitan	HALLIGAN, Raymond James	Liberal
North Metropolitan	TRAVERS, Kenneth Dunstan Elder	Australian Labor Party
North Metropolitan	WATSON, Giz	Greens
South Metropolitan	DOUST, Catherine Esther	Australian Labor Party
South Metropolitan	ELLERY, Suzanne Mary	Australian Labor Party
South Metropolitan	MILLS, Sheila *	Australian Labor Party
South Metropolitan	O'BRIEN, Simon	Liberal
South Metropolitan	SCOTT, Barbara Mary	Liberal
South West	BENSON-LIDHOLM, Matthew Francis *	Australian Labor Party
South West	FARINA, Adele	Australian Labor Party
South West	HALLETT, Nigel Charles	Liberal
South West	HOUSE, Barry John	Liberal
South West	LLEWELLYN, Paul Vincent *	Green



Electorate	Member	Party
South West	MCSWEENEY, Robyn Mary	Liberal
South West	TALBOT, Sally Elizabeth	Australian Labor Party

* Members elected for the first time at the 2005 State general election on Saturday 26 February 2005

** Brian Ellis was elected as a Member for the Agricultural Region in a re-count conducted on 16 July 2007 to replace Margaret-Anne Rowe who resigned

*** Batong Vu Pham was elected as a Member for the East Metropolitan Region in a re-count conducted on 19 November 2007 to replace Louise Pratt who resigned

**** Wendy Duncan was elected as a Member for the Agricultural Region in a re-count conducted on 29 January 2008 to replace Murray Criddle who resigned

***** Shelley Archer was elected at the 2005 State general election as a Member of the Australian Labor Party but resigned during the Parliamentary term and became an Independent Member of Parliament.



A person can nominate to be elected as a member of either the Legislative Assembly or the Legislative Council of Western Australia if he or she:

- has lived in Western Australia for one year;
- is 18 years of age or over;
- is an elector for the Legislative Assembly; and
- is not subject to any legal incapacity.

A person cannot nominate if he or she:

- is an undischarged bankrupt;
- has been convicted of treason or a felony; or
- is a member of a House of Parliament different from the House for which they intend to nominate, at the hour of nomination.

A peis **about their usual job?**

A person who is employed in the State public sector must take leave of absence from the next working day after the nomination is lodged until the district or region is declared. Some State employees may also be required by other legislation to resign before nominating for an election.

A member of the judiciary or a Parliament of the Commonwealth or another State or Territory must resign from office in order to nominate. Holders of certain other senior positions must also resign in order to nominate.

Nominating

To nominate, you must give a written nomination and a deposit of \$250.00 to the Returning Officer for the district or region. Nomination forms can be obtained by contacting the Returning Officer or the Western Australian Electoral Commission. Registered political parties may lodge the nomination for all their candidates at the office of the Electoral Commissioner if they so choose. These group nominations must be lodged at least 24 hours before the hour of nomination.

Returning Officers receive nominations at any time after the issue of the writ for the election and before the hour of nomination. The hour of nomination is fixed in the election writ on a date between 7 and 45 days after the date of the writ.

The deposit is returned after the election if the candidate:

- is elected
- gains more than 4% of the total votes in a 2 candidate election
- gains more than 4% of the first preference votes polled by all candidates in an election with more than 2 candidates, or
- dies before polling day or on polling day before the close of the poll.

When a deposit is not returned, it is forfeited.

A candidate may withdraw a nomination up to the hour of the nomination, but forfeits the deposit.



Legislation for the registration of political parties is contained in Part IIIA of the *Electoral Act 1907*. Eligible political parties may be registered by the Electoral Commissioner, enabling the use of a party name or abbreviation on the ballot paper. Unregistered parties will not be able to use a party name on ballot papers.

Eligibility for registration

Political parties are eligible for registration if they have at least 500 members who are electors. Members include members of related parties where one is part of the other or both are parts of the same political party.

Names of political parties

The name must not be more than six words; be obscene or offensive; an existing party name or closely resembling an existing party name; include the words *royal* or *independent* or otherwise cause confusion if registered. The name must not be a public body name, or closely resemble a public body name.

Applications for registration

An application for registration is to be submitted on the approved form by the secretary of the party to the Electoral Commissioner. The application must include the following information:

- the name of the political party;
- the abbreviation of the party name for use on ballot papers;
- the name and address of the secretary;
- names and addresses of at least 500 members who are electors;
- a copy of the party's constitution; and
- any other prescribed information.

Applications for registration will be determined in the order in which they are received.

Details of the application will be published by the Electoral Commissioner in a notice in the *Western Australian Government Gazette* and a local newspaper inviting electors to submit any reasons for objection to registration. Objections are to be submitted within one month of the date of publication of the notice.

Registration

If the Electoral Commissioner is satisfied that the application complies with the requirements of the Act after considering all relevant information and public submissions, the party will be registered. This is effected by entering the details in the Register of Political Parties. The party's registration will be listed in the *Government Gazette* and the party secretary will be notified in writing. If the application is refused, the Electoral Commissioner will give the party secretary written notice of the reasons for the refusal.

During an election period (from the day of the issue of the writ until the last day for the return of the writ), no action will be taken on the register of political parties.

Public access to the Register

Public inspection is available without fee at the Western Australian Electoral Commission. As soon as practicable after the issue of the writ for a State general election, the Electoral Commissioner is required to publish in the *Government Gazette* the names of all political parties and their secretaries included in the register.

The names and addresses of the 500 members used for registration purposes are not included in the Register and will not be available for public inspection.

Amendments to the Register

The secretary of a registered political party may make an application to amend the information or replace documents in the Register. However this must still be in accordance with the provisions of the Act.



Cancellation of registration of parties

The Electoral Commissioner may cancel the registration of a political party at the request of the party secretary or for any of the following reasons:

- the party no longer exists;
- the party is not a parliamentary party and does not have at least 500 members who are electors;
- the candidates at a conjoint election held after the registration of the party did not include at least one candidate endorsed by the party;
- the registration was obtained by fraud or misrepresentation; or
- a return required to be lodged under Part VI of the *Electoral Act 1907* by the agent of that political party has been outstanding for more than 12 months.

The Electoral Commissioner is required to give written notice of the intention to cancel registration (other than if obtained by fraud or misrepresentation) to the secretary of the political party and also publish a notice in the *Government Gazette* and a newspaper circulating within the State. Persons may, within fourteen days after the *Government Gazette* notice, object to the proposed cancellation in writing. The Electoral Commissioner is to consider any objection before taking action on cancellation.

Review of decisions

Any person affected by the Electoral Commissioner's decision on registration, refusal of registration, cancellation of a registration or amendment of registration may apply in writing to the Supreme Court for a review of the decision. This must be within one month of the Electoral Commissioner's decision.

Further information

Further details about the legislation are available by reading Part IIIA of the *Electoral Act 1907*, which is available from the State Law Publisher.

Other enquiries should be directed to the Western Australian Electoral Commission.



The 2007 Electoral Distribution was completed on 29 October 2007 when details of the division of the State were published in the *Government Gazette*. Following is an explanation of why electoral distributions are held and a description of the outcome.

What is an electoral distribution?

An electoral distribution is the drawing of electoral boundaries in line with local changes in elector numbers. The process ensures that no electorate becomes too large or too small. An electoral distribution is also known as a division of the State.

Why do we have electoral distributions?

We have electoral distributions to ensure that the number of electors in each district is within the acceptable range at each election. It is necessary to draw the boundaries to take account of the rise and fall in elector numbers in each district. The 2007 Electoral Distribution resulted from legislative changes that were passed in May 2005.

When are electoral distributions held?

Electoral distributions now commence as soon as practicable two years after polling day following each State general election (previously as soon as practicable one year after polling day following two successive State general elections). The 2003 Electoral Distribution was due to commence on 11 February 2002 but was delayed pending the outcome of litigation on 'one vote, one value' legislation. With the High Court finding, in October 2002, that the legislation was not validly passed in the Legislative Council, the 2003 Electoral Distribution was able to commence in February 2003. Following the 2007 Electoral Distribution, the next distribution will be due to commence in late 2010.

When was the last electoral distribution?

The last electoral distribution was completed on 4 August 2003.

How long does the electoral distribution take to complete?

The formal process takes approximately seven months from the time the call for written suggestions is made. The timetable is set out in legislation once the call for written suggestions is made.

Who conducts the electoral distribution?

Three Electoral Distribution Commissioners are prescribed under the *Electoral Act 1907* to conduct the distribution. For the 2007 Electoral Distribution they were:

- the Chief Justice of Western Australia (Chairman) – The Hon. Wayne Martin
- the Electoral Commissioner – Mr Warwick Gately AM
- the Government Statistician – Mr Michael Tindall

The Western Australian Electoral Commission provides administrative support to the Commissioners.

What is the average district enrolment?

A snapshot of the electoral roll is taken at a particular point in time to form a basis for the number of people to include in each district. This is known as the average district enrolment for the purposes of the distribution. It does not affect any elector's enrolment or their entitlement to vote in State elections. The average district enrolment for the 2007 Electoral Distribution was determined on 26 February 2007.

What are the steps in the electoral distribution process?

Part IIA of the *Electoral Act 1907* defines the conduct of the electoral distribution after the determination of the average district enrolment. It is a five step process.

STEP 1 is the publication of an invitation to lodge written suggestions within a 30-day period, after which these suggestions are made available for viewing.



- STEP 2** is a 14-day period during which written comments on these suggestions may be made.
- STEP 3** is a 42-day period during which the Electoral Distribution Commissioners prepare and publish the proposed boundaries.
- STEP 4** is a 30-day period during which written objections to the proposed boundaries may be lodged.
- STEP 5** is a 90-day period during which the Electoral Distribution Commissioners consider objections and publish the final distribution in the *Government Gazette*.

When do the new boundaries take effect?

The new boundaries take effect at the next State general election.

What if a by-election is called before the next State general election?

The boundaries created during the 2003 Electoral Distribution apply to any by-elections that may occur before the next State general election. A by-election will only elect a candidate to fulfil the remainder of the current term of office. At the next State general election all districts and regions will be contested on the boundaries as determined at the 2007 Electoral Distribution.



The Western Australian Electoral Commission is committed to ensure voting is made as convenient as possible for all electors. The initiatives undertaken by the Commission to fulfil this commitment include:

- closed captioning on advertisements;
- a Telephone Typewriter Service (TTY) is available to assist electors with hearing impairment;
- providing access to the Translating and Interpreting Service (TIS) through the Commission's Election Enquiries Service prior to polling day;
- training for all electoral staff;
- providing access to the Multilingual Voters Guide, which is available at every early voting centre and polling place. The Multilingual Voters Guide provides instructions on how to vote in languages other than English;
- using the Internet to provide information on candidates, State electoral districts and regions, polling places and election results. The web site has been designed to meet the requirements for people with vision impairment;
- desktop voting screens on request;
- assistance to access polling places on request;
- assistance in voting on request;
- Hard of Hearing cards at all early voting centres and polling places;
- video magnifiers at some early voting centres and polling places;
- magnifying sheets at all polling places
- mobile polling teams who visit many hospitals and special institutions in the days before polling day to allow electors the opportunity to vote without having to go to a polling place;
- drive-in polling places;
- accessible parking bays at some polling places; and
- multiple format information on request.

Locations with drive-in polling, video magnifiers and best wheelchair access will be advertised on the Commission's web site before the election and in *The West Australian* on polling day.



Preferential voting is a system whereby a candidate must poll an absolute majority of the total formal votes (ie in excess of 50% in order to be elected to the vacancy).

Under a full preferential system, a voter is required to indicate a preference for each candidate on the ballot paper using numbers. If, after all first preference votes have been counted, no candidate has obtained an absolute majority of all formal votes, then the candidate with the fewest number of first preference votes is excluded. The excluded candidate's second preference votes are then distributed to the remaining candidates..

If, after that exclusion no candidate has obtained an absolute majority of formal votes, the next remaining candidate with the fewest votes is excluded and all his/her votes (second preferences and those received from the previously excluded candidate) are distributed to the remaining candidates.

The above process is continued until one candidate obtains an absolute majority of formal votes and is elected. The absolute majority is calculated excluding informal and exhausted votes. An example of the process is shown below:

Example:

Full Distribution of Preferences

Counts	Candidate A	Candidate B	Candidate C	Candidate D	Total Valid Votes	Exhausted Votes	Total Votes
First Preference Votes	1,036	1,922	3,143	1,310	7,411	–	7,411

Step 1

The absolute majority required at this stage of the count is 3,706. As no candidate has achieved this on first preference votes, Candidate A is excluded (as the candidate with the fewest number of first preference votes). The excluded candidate's second preference votes are then distributed to the remaining candidates' progressive totals. Exhausted votes are formal; however, these are not added to any candidate's total as no consecutive preference has been indicated for the remaining candidates.

Counts	Candidate A	Candidate B	Candidate C	Candidate D	Total Valid Votes	Exhausted Votes	Total Votes
	Excluded						
First Distribution	–1,036	386	379	260		14	1,036
Progressive Total		2,308	3,519	1,570	7,397	14	7,411



Step 2

At this stage of the count, the absolute majority is now 3,699. As no candidate has yet achieved this, Candidate 4 is the next to be excluded (as the candidate with the fewest number of votes following the first distribution with 1,570 votes). The excluded candidate's second preference votes from the first preference (1,310 votes) are then distributed to the remaining candidates. The third preference votes from the first distribution (260 votes) are also distributed to the remaining candidates. These votes are then added to the progressive total.

Counts	Candidate A	Candidate B	Candidate C	Candidate D	Total Valid Votes	Exhausted Votes	Total Votes
				Excluded			
Second Distribution		784	733	-1,570		53	1,570
Progressive Total		3,092	4,252		7,344	67	7,411

Step 3

There are now only two candidates remaining and the candidate with the absolute majority is elected. The absolute majority at this stage of the count is 3,673 with the 67 exhausted votes having the effect of reducing the total valid votes included in the calculation of the absolute majority.

Result

Candidate C is elected with a majority of 579 votes.



Proportional Representation System

Proportional representation (PR) is a type of vote counting system which can be used when there are multiple vacancies at an election. Under PR systems, candidates are elected on the proportion of the total vote that they receive. Preferences are transferred from elected or excluded candidates to continuing candidates in order to determine the most popular, or preferred, candidates.

This type of preference vote transfer to continuing candidates is termed the Single Transferable Vote (STV).

In 1987, legislation was passed by the Western Australian Parliament for the introduction of PR for Legislative Council elections in multi-member regions. In 2007, the PR formula was modified to the Weighted Inclusive Gregory Method (WIGM).

The PR vote counting system is designed to ensure that vacant positions (or seats) are allocated as nearly as possible in proportion to the votes received. The principle is simple but the steps in the process can be complicated. While the steps help ensure that the system is fair, it may take longer to finalise the result.

Step 1

Informal ballot papers are set aside.
First preference votes for each candidate on formal ballot papers are counted.

Step 2

Calculate the Quota (Q)

$$Q = \frac{\text{Valid votes}}{\text{Number of vacancies} + 1} + 1$$

Step 3

Candidates with votes equal to or greater than the quota are elected. If all vacancies have been filled, the election is finished. If some vacancies remain unfilled, the votes of elected candidates are examined to determine if any received more votes than the quota (surplus votes).

The elected candidate's surplus votes (those in excess of the quota) are distributed to continuing candidates in the count. They are distributed according to the next available preference marked on the ballot papers. All the elected candidate's ballot papers are examined and distributed at a transfer value (TV).

For ballot papers received from the elected candidate's first preference votes, the current TV is

$$\frac{\text{Number of surplus votes of elected candidate}}{\text{Total votes of elected candidate}}$$

For ballot papers received from previous surplus distributions, the TV is

$$\frac{\text{current transfer value}}{\text{previous transfer value}}$$

Total votes for each of the continuing candidates are calculated by multiplying the number of ballot papers to be transferred to a continuing candidate by the transfer value.

Step 3 is then revisited.

The candidate with the least votes is excluded from the count. That candidate's votes are distributed to continuing candidates according to the next available preference indicated on the ballot papers.

The votes of an excluded candidate are distributed to continuing candidates at the same transfer value as they were received.

Each continuing candidate's total votes are calculated, then:

- Step 3 is revisited, or
- If the number of continuing candidates is equal to the number of vacancies remaining unfilled, all those candidates are declared elected and the election is finished.

Note: A continuing candidate is one who has not yet been elected or excluded from the count.



Notional Distribution of Preferences

A notional distribution of preferences is an interim exercise of counting the vote in an election contest using the preferential system of voting, in order to achieve an indication of the most likely result.

A notional distribution is conducted by polling place staff on election night. It does not take the place of a required full distribution of preferences that is eventually undertaken in order to determine the successful candidate in a district election by the Returning Officer. Rather it is merely a guide as to what the final result may be.

Background details

A notional distribution of preferences was first introduced to a count by the Western Australian Electoral Commission for the by-elections in the State electoral districts of Fremantle and Maylands on 26 May 1990.

It has been successfully used at all subsequent by-elections and the State general elections since 1993.

How is a national distribution of preferences conducted?

A notional distribution of preferences seeks to anticipate the flow of preferences of minor candidates to the two major candidates. The ballot papers of the minor candidates are examined, and each ballot paper is allocated to whichever of the two major or non-excluded candidates has the LOWEST preference number opposite their name.



District	Name	Contact Details
District of Albany	Heather Marr	Mob: 0428 888 395
District of Alfred Cove	Paul Davison	Mob: 0411 438 968
District of Armadale	Danny Wallace	Mob: 0413 271 711
District of Balcatta	Diane Gearon	Mob: 0419 048 637
District of Bassendean	Mark Ducksbury	Mob: 0434 327 016
District of Bateman	Peter Rafferty	Mob: 0419 924 434
District of Belmont	Linda Sperring	Mob: 0418 928 782
District of Blackwood-Stirling	Kenneth Gwynne	Mob: 0419 042 268
District of Bunbury	Ian Butcher	Mob: 0413 271 703
District of Cannington	Brendon Barlow	Mob: 0401 991 781
District of Carine	Patrick Satie	Mob: 0413 271 721
District of Central Wheatbelt	Martin Morris	Mob: 0428 888 396
District of Churchlands	Harold Crosby	Mob: 0434 327 015
District of Cockburn	Jeff Clark	Mob: 0434 327 014
District of Collie- Preston	Wayne Webster	Mob: 0428 888 407
District of Cottesloe	Jennifer Morrissey	Mob: 0413 271 708
District of Darling Range	Ian Bonney	Mob: 0434 327 012
District of Dawesville	Ian Frame	Mob: 0403 020 637
District of Eyre	Geoffrey Landwehr	Mob: 0429 391 596
District of Forrestfield	Jeff Solliss	Mob: 0408 912 306
District of Fremantle	Tracey Elliott	Mob: 0413 271 935
District of Geraldton	Michelle Gard	Mob: 0418 935 285

District	Name	Contact Details
District of Girrawheen	Mary Petrou	Mob: 0414 895 196
District of Gosnells	Neil Whiteley	Mob: 0410 546 058
District of Hillarys	Lyn Cavanagh	Mob: 0434 308 367
District of Jandakot	Peter Drew	Mob: 0409 883 073
District of Joondalup	Michael Brierley	Mob: 0413 271 936
District of Kalamunda	Celia Millar	Mob: 0434 307 926
District of Kalgoorlie	Ruth Clarke	Mob: 0404 813 241
District of Kimberley	Ron Camp	Mob: 0408 900 147
District of Kingsley	Carl Binning	Mob: 0413 271 933
District of Kwinana	Gerd- Heiner Heppekausen	Mob: 0434 307 602
District of Mandurah	Derek Summers	Mob: 0434 325 539
District of Maylands	Andrew Wilson	Mob: 0434 325 547
District of Midland	Michele Librizzi	Mob: 0413 271 723
District of Mindarie	Clare Parvin	Mob: 0434 308 873
District of Moore	Tim Maher	Mob: 0413 271 706
District of Morley	Jim Petrovski	Mob: 0434 308 077
District of Mt Lawley	David Lees Brown	Mob: 0403 342 110
District of Murray-Wellington	Brian Price	Mob: 0418 848 844
District of Nedlands	Raymond Wyatt	Mob: 0434 325 548
District of Nollamara	Linda Higgie	Mob: 0434 307 916
District of North West	Brian Robartson	Mob: 0428 888 401
District of Ocean Reef	Shane Wilkinson	Mob: 0419 940 503



District	Name	Contact Details
District of Perth	Chris Gerginis	Mob: 0413 271 720
District of Pilbara	David Anderson	Mob: 0401 991 767
District of Riverton	Tony Thompson	Mob: 0419 355 095
District of Rockingham	Neville White	Mob: 0438 914 466
District of Scarborough	Louise Foppoli	Mob: 0419 911 619
District of South Perth	Tim Rigden	Mob: 0434 308 161
District of Southern River	Kevin Parsons	Mob: 0437 208 703
District of Swan Hills	Warren Southwell	Mob: 0434 308 365
District of Vasse	Peter Carter	Mob: 0417 182 656
District of Victoria Park	Kay Heron	Mob: 0417 985 104
District of Wagin	Karen Ward	Mob: 0428 888 404
District of Wanneroo	Pelham Weir	Mob: 0434 327 013
District of Warnbro	Bruce Houston	Mob: 0418 940 600
District of West Swan	Ron Van Beek	Mob: 0413 056 932
District of Willagee	Shaun Major	Mob: 0431 495 045



Region	Name	Contact Details
East Metropolitan Region	Phil Richards	Mob: 0404 813 200
North Metropolitan Region	Greg Rickie	Mob: 0419 048 956
South Metropolitan Region	Clive Harper	Mob: 0407 425 995
Agricultural Region	Warwick Smith	Mob: 0419 967 628
Mining and Pastoral Region	Substitute Returning Officer: Nigel Bushby (7/8/08 to 25/8/08) Returning Officer: Gavin Cotterell (25/8/08 onwards)	Mob: 0419 049 850 Mob: 0404 027 191
South West Region	Sally Thomas	Mob: 0437 611 459



No	Name	Party	Dates
1	Rt Hon. John Forrest	Ministerialist	29 December 1890 – 15 February 1901
2	Hon. George Throssell	Ministerialist	15 February 1901 – 27 May 1901
3	Hon. George Leake	Oppositionist	27 May 1901 – 21 November 1901
4	Hon. Alfred Edward Morgans	Ministerialist	21 November 1901 – 23 December 1901
5	Hon. George Leake	Oppositionist	23 December 1901 – 24 June 1902
6	Hon. Sir Walter Hartwell James	Ministerialist	1 July 1902 – 10 August 1904
7	Hon. Henry Daghish	Australian Labor Party	10 August 1904 – 25 August 1905
8	Hon. Sir Cornthwaite Hector Rason	Ministerialist	25 August 1905 – 7 May 1906
9	Hon. Sir Newton James Moore	Ministerialist	7 May 1906 – 16 September 1910
10	Hon. Frank Wilson	Ministerialist	16 September 1910 – 7 October 1911
11	Hon. John Scaddan	Australian Labor Party	7 October 1911 – 27 July 1916
12	Hon. Frank Wilson	Liberal	27 July 1916 – 28 June 1917
13	Hon. Sir Henry Bruce Lefroy	National Liberal	28 June 1917 – 17 April 1919
14	Hon. Sir Hal Pateshall Colebatch	Liberal	17 April 1919 – 17 May 1919
15	Hon. Sir James Mitchell	Nationalist	17 May 1919 – 15 April 1924
16	Hon. Philip Collier	Australian Labor Party	16 April 1924 – 23 April 1930
17	Hon. Sir James Mitchell	Nationalist	24 April 1930 – 24 April 1933
18	Hon. Philip Collier	Australian Labor Party	24 April 1933 – 19 August 1936
19	Hon. John Collings Willcock	Australian Labor Party	20 August 1936 – 31 July 1945
20	Hon. Frank Joseph Scott Wise	Australian Labor Party	31 July 1945 – 1 April 1947
21	Hon. Sir Duncan Ross McLarty	Liberal and Country League	1 April 1947 – 23 February 1953
22	Hon. Albert Redvers George Hawke	Australian Labor Party	23 February 1953 – 2 April 1959
23	Hon. Sir David Brand	Liberal	2 April 1959 – 3 March 1971
24	Hon. John Trezise Tonkin	Australian Labor Party	3 March 1971 – 8 April 1974
25	Hon. Sir Charles Walter Michael Court	Liberal	8 April 1974 – 25 January 1982
26	Hon. Raymond James O'Connor	Liberal	25 January 1982 – 25 February 1983
27	Hon. Brian Thomas Burke	Australian Labor Party	25 February 1983 – 25 February 1988
28	Hon. Peter M'Callum Dowding	Australian Labor Party	25 February 1988 – 12 February 1990
29	Hon. Carmen Mary Lawrence	Australian Labor Party	12 February 1990 – 16 February 1993
30	Hon. Richard Fairfax Court	Liberal	16 February 1993 – 16 February 2001
31	Hon. Dr Geoffrey Ian Gallop	Australian Labor Party	16 February 2001 – 25 January 2006
32	Hon. Alan Carpenter	Australian Labor Party	25 January 2006 – <i>incumbent</i>



Q. What results will be available on election night?

A. Legislative Assembly:

Progressive totals of first preference votes as and when these are transmitted to the tally room from the district Returning Officers. A notional distribution of preferences is also carried out by the Returning Officers and transmitted to the Tally Room at the end of the count. This includes a notional two-candidate preferred figure.

Legislative Council:

A preliminary count of ticket and first preference votes per region.

Q. In what form can the results on election night be obtained?

A. The results will be available on the Western Australian Electoral Commission web-site, Elections WA at www.electionswa.com, and will be refreshed every 5 minutes. Details of votes cast at each polling place will be available.

At the Tally Room:

- Tally Room viewing and enquiry screens.
- Printed output.

Results are also broadcast by the ABC and commercial television/radio stations.

Q. Who has access to the Tally Room on election night?

A. Space at the Tally Room is limited. Accordingly, access is largely restricted to members of the media, political party officials, candidates and Commission staff.

Q. When will the final results for the forthcoming State general election be available?

A. Legislative Assembly:

Final results will be available after the distribution of preferences is carried out by the Returning Officer and all absent, postal and provisional votes have been counted. This is expected to be completed by the end of the week following polling day.

Legislative Council:

Generally, final results for the Legislative Council are available approximately three weeks after polling day.

Q. What methods of election are used for Western Australian State general elections?

A. Legislative Assembly – Full Preferential

Legislative Council – Proportional Representation

See Fact Sheets 10 and 11 for a description of each method.

Q. What publications are available from the Western Australian Electoral Commission?

A. The following publications are available:

- Election statistical and operational reports. This includes reports on past State general elections, referendums and by-elections;
- Streets, Towns and Places Directory 2008;
- District and region maps;
- Annual Reports;
- Political Finance Annual Reports;
- Local Government Postal Elections Reports;
- Candidates and Scrutineers Manuals;

While some of the above publications are available free of charge, others need to be purchased. Contact the Western Australian Electoral Commission for further details.



Q. Under what legislation is the Western Australian Electoral Commission administered?

A. Under the *Alteration of Statutory Designations Act 1974*, certain statutes are placed under the control of the Minister for Parliamentary and Electoral Affairs. Of these, the Western Australian Electoral Commission is responsible for administering the following:

- *Electoral Act 1907*;
- *Referendums Act 1983*;
- *Franchise Act 1916*.

The following Regulations relate to the legislation:

- Electoral (Political Finance) Regulations 1996;
- Electoral Regulations 1996;
- Electoral (Ballot Paper Forms) Regulations 1990;
- Referendums Regulations 1984.

The above listed Acts and Regulations are available for purchase from State Law Publisher.



Absent Vote	A vote cast at a polling place in an electoral district other than that for which the elector is enrolled.
By-election	An election conducted for an electorate vacated by a Member of Parliament for reason other than Parliament's expiration or dissolution.
Donkey Voting	<p>The preferential system of voting requires the elector to number the ballot paper using consecutive numbers. When a ballot paper is marked 1, 2, 3 etc, from the top to the bottom of the ballot paper, it may be termed a donkey vote. A ballot paper marked in this way may reflect an intentional choice of candidates on the part of the elector, or the choice to ignore the difference between candidates. A donkey vote is a valid vote.</p> <p>A reverse donkey vote is where the ballot paper has been marked from top to bottom in descending numerical order eg 8, 7, 6, 5 etc.</p>
Early Vote	A vote lodged before polling day by an elector unable to attend a polling place during normal voting hours on polling day. Early votes include both pre-poll and postal votes.
Early Vote (by post)	An application form for a postal vote must be completed, and, once received by the Western Australian Electoral Commission, ballot papers are posted to the elector for completion and return.
Early Vote (Pre-poll)	An elector may apply for a postal vote in person prior to election day at nominated issuing points if he or she is unable to attend a polling place during normal voting hours on election day.
Electorate	A defined area (which may be the State district or region) and the people within it who are eligible to vote.
Exhausted Vote	A vote that has reached the stage where no further preferences can be distributed.
General Early Voter	A General Early Voter is an elector who has applied to receive an early vote (by post) automatically in the event of a State general election or referendum, because of an ongoing inability to attend a polling place on polling day.
Independent	A candidate or elected Member of Parliament who is not endorsed by a political party.
Informal Vote	A ballot paper that is either left blank, not marked in accordance with instructions or where the voter's full intention is unclear. These ballot papers do not contribute to the election of a candidate and are not included in calculating the quota/absolute majority required to be successful.
Legislative Assembly	In Western Australia, this is the Lower House of Parliament. The party or coalition of parties that achieves a majority of seats in this House forms the government.
Legislative Council	In Western Australia, this is the Upper House of Parliament. It is sometimes referred to as the "House of Review" and is comprised of 34 members elected from the State's six regions.
Marginal Electorate	An electorate where the swing required to unseat the sitting member is very small. The margin involved can vary depending on circumstances; however a seat requiring a swing of 5% or less is usually considered marginal. These electorates are prime targets for candidates and parties at elections.
Mobile Polling	Polling carried out in remote areas, hospitals and special institutions that the Electoral Commissioner has declared will be visited by staff.
Ordinary Vote	A vote recorded in the normal manner on election day, at a polling place within the electorate for which the elector is enrolled.



Political Party	<p>A political party is a group of people with similar ideas or aims, some of whose members nominate as candidates at elections for the Parliament of this State. At an election, the party (or coalition of parties) who wins the greatest number of seats in the Legislative Assembly forms the government.</p> <p>Under the Western Australian <i>Electoral Act 1907</i>, a political party can register with the Western Australian Electoral Commissioner for State general elections. Registration enables the use of a party name on the ballot paper and the central lodgement of candidates' nomination forms.</p> <p>Further details on the registration of political parties can be found in Fact Sheet 8.</p>
Primary Vote	<p>The Primary Vote for a candidate is the number of first preferences received on formal ballot papers in a count.</p>
Provisional Vote	<p>This vote is given at the polling place to electors who are challenged by a scrutineer, omitted from the electoral roll in error or whose name has already been ruled off the roll on election day. The elector is required to sign a declaration and vote. The declaration and vote are then sent to the Western Australian Electoral Commission for verification, and, where valid, the vote is admitted to the count.</p>
Returning Officer	<p>An electoral officer who is appointed by the Electoral Commissioner to be responsible for the conduct of district or region elections.</p>
Swing	<p>The measure in percentage terms of a movement in electoral support. This term is used to indicate an actual change in voter support for a political party or candidate, or the change required to win a seat or achieve government.</p>
Swinging Voter	<p>An elector who changes his or her vote from one political party to another at electoral events.</p>
Ticket Voting	<p>This type of voting applies to the Legislative Council only. Voters may number one ticket box to indicate that their vote follows the order of preferences designated by a particular group or political party.</p>
Two-Candidate Preferred Count	<p>This describes the situation where there is a full distribution of preferences through to two remaining candidates. It is undertaken for statistical purposes where a candidate is elected at an earlier stage of the count.</p>
Writ	<p>The legal document authorising an election to be held and which also sets key elements of the election timetable. The Electoral Commissioner is directed to proceed with an election or elections upon receipt of the writ from the Governor or, in certain circumstances, the Speaker of the Legislative Assembly.</p>



WESTERN AUSTRALIA

Western Australian Electoral Commission

Level 2, 111 St Georges Terrace, Perth WA 6000
Telephone: 13 63 06
(08) 9214 0400
TTY: (08) 9214 0487
Fax: (08) 9226 0577
E-mail: waec@waec.wa.gov.au
Web-site: www.waec.wa.gov.au
www.electionswa.com (Election Results)

Electoral Education Centre

Constitutional Centre of Western Australia, Parliament Place, West Perth WA 6005
Telephone: (08) 9222 6955
Fax: (08) 9222 6960
Email: eec@waec.wa.gov.au
Web-site: www.waec.wa.gov.au

Western Australian Parliament

Parliament House, Harvest Terrace, Perth WA 6000
Telephone: 1800 199 187
(08) 9222 7222
E-mail: helpdesk@parliament.wa.gov.au
Web-site: www.parliament.wa.gov.au

The Constitutional Centre of Western Australia

Cnr Havelock Street and Parliament Place, West Perth WA 6005
Telephone: 1800 647 249
(08) 9222 6922
Fax: (08) 9222 6911
E-mail: ccentre@dpc.wa.gov.au
Web-site: www.ccentre.wa.gov.au

State Law Publisher

Ground floor, 10 William Street, Perth WA 6000
Telephone: (08) 9321 7688
Fax: (08) 9321 7536
E-mail: sales@dpc.wa.gov.au
Web-site: www.slp.wa.gov.au

Australian Electoral Commission

Level 3, 111 St Georges Terrace, Perth WA 6000
Telephone: 13 23 26
Fax: (08) 6363 8004
E-mail: PERTH@aec.gov.au
Web-site: www.aec.gov.au

OTHER ELECTORAL OFFICES

Australian Capital Territory Electoral Commission

O'Connell Centre, Corner of Stuart St and Blaxland Cres, Griffith, ACT 2603

Telephone: (02) 6205 0033

Fax: (02) 6205 0382

E-mail: elections@act.gov.au

Web-site: www.elections.act.gov.au

Electoral Commission of Queensland

Forestry House, Level 6, 160 Mary Street, Brisbane QLD 4000

Telephone: 1300 881 665

Fax: (07) 3229 7391

E-mail: ecq@ecq.qld.gov.au

Web-site: www.ecq.qld.gov.au

Northern Territory Electoral Office

AANT Building, Level 2, 79–81 Smith Street, Darwin NT 0800

Telephone: (08) 8999 5617

Fax: (08) 8999 5845

Web-site: <http://notes.nt.gov.au/nteo/Electoral.nsf?OpenDatabase>

New South Wales Electoral Commission

Level 25, 201 Kent Street, Sydney NSW 2000

Telephone: 1300 135 736

(02) 9290 5999

TTY: (02) 9247 3568

Fax: (02) 9290 5991

Web-site: www.elections.nsw.gov.au

State Electoral Office of South Australia

134 Fullarton Road, Rose Park SA 5067

Telephone: (08) 8401 4300

Fax: (08) 8401 4333

E-mail: Comments.seo@saugov.sa.gov.au

Web-site: www.seo.sa.gov.au

Tasmanian Electoral Office

Telstra Centre, Level 2, 70 Collins Street, Hobart TAS 7000

Telephone: (03) 6233 2000

Fax: (03) 6224 0217

E-mail: ballot.box@electoral.tas.gov.au

Web-site: www.electoral.tas.gov.au

Victorian Electoral Commission

Level 8, 505 Little Collins Street, Melbourne VIC 3000

Telephone: (03) 9299 0520

TTY: (03) 9299 0570

Web-site: www.vec.vic.gov.au

The following list of registered political parties was correct as at 7 August 2008.

Political Party	Abbreviation	Registration Date
Australian Democrats	DEMOCRATS	21 October 2000
Australian Labor Party (Western Australian Branch)	Australian Labor Party	21 October 2000
Christian Democratic Party WA	Christian Democratic Party WA	5 January 2001
Citizens Electoral Council of Australia	CITIZENS ELECTORAL COUNCIL	18 August 2004
Family First Party WA Inc	FAMILY FIRST	14 January 2005
liberals for forests	liberals for forests	9 July 2001
National Party of Australia (WA) Incorporated	THE NATIONALS	21 October 2000
New Country Party	New Country Party	30 November 2004
One Nation Western Australia	ONE NATION	29 December 2000
The Greens (WA) Inc	Greens (WA)	21 October 2000
The Liberal Party of Australia (Western Australian Division) Incorporated	Liberal	21 October 2000
Nurses for Health	Nurses for Health	29 April 2005
Daylight Saving Party	Daylight Saving Party	29 April 2005