



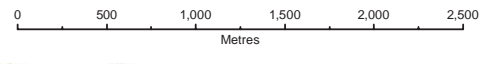
Office of the
ELECTORAL DISTRIBUTION COMMISSIONERS

ELECTORAL DISTRICT OF WANNEROO

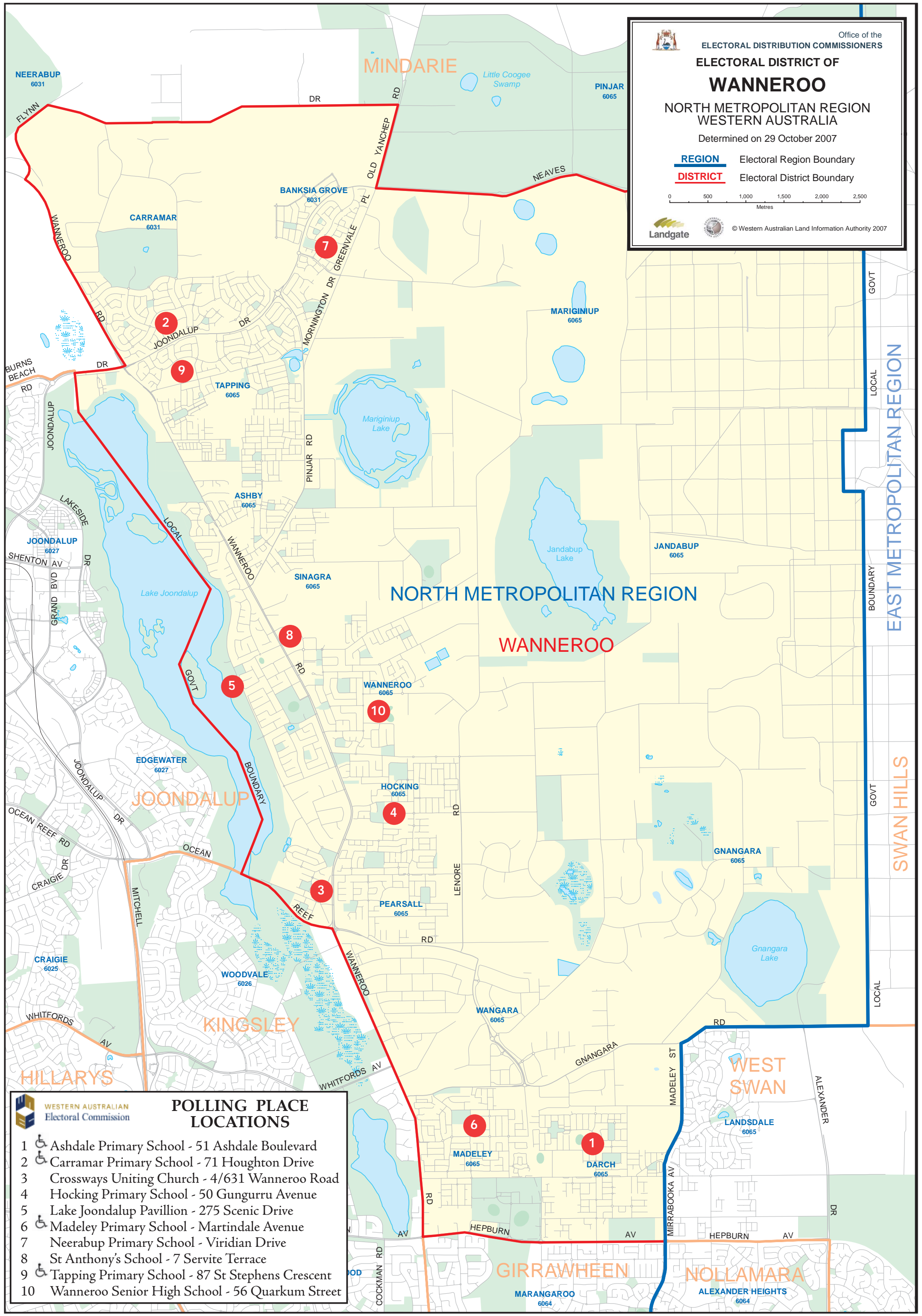
NORTH METROPOLITAN REGION
WESTERN AUSTRALIA

Determined on 29 October 2007

REGION Electoral Region Boundary
DISTRICT Electoral District Boundary



© Western Australian Land Information Authority 2007



POLLING PLACE LOCATIONS

- 1 Ashdale Primary School - 51 Ashdale Boulevard
- 2 Carramar Primary School - 71 Houghton Drive
- 3 Crossways Uniting Church - 4/631 Wanneroo Road
- 4 Hocking Primary School - 50 Gunguru Avenue
- 5 Lake Joondalup Pavillion - 275 Scenic Drive
- 6 Madeley Primary School - Martindale Avenue
- 7 Neerabup Primary School - Viridian Drive
- 8 St Anthony's School - 7 Servite Terrace
- 9 Tapping Primary School - 87 St Stephens Crescent
- 10 Wanneroo Senior High School - 56 Quarkum Street